



# Demographic and Income Comparison Profile

255 Lebanon Rd, Frisco, Texas, 75034  
Rings: 1, 3, 5 mile radii

Prepared by Esri  
Latitude: 33.12716  
Longitude: -96.89064

	1 mile	3 miles	5 miles
<b>Census 2010 Summary</b>			
Population	2,995	57,216	131,261
Households	1,029	18,611	44,525
Families	846	15,522	34,727
Average Household Size	2.91	3.07	2.94
Owner Occupied Housing Units	963	16,363	33,816
Renter Occupied Housing Units	66	2,248	10,709
Median Age	36.3	34.4	33.1
<b>2017 Summary</b>			
Population	9,100	79,971	182,620
Households	2,907	26,000	61,321
Families	2,358	21,265	47,021
Average Household Size	3.13	3.07	2.98
Owner Occupied Housing Units	2,395	22,008	44,545
Renter Occupied Housing Units	512	3,992	16,776
Median Age	35.0	35.2	34.0
Median Household Income	\$125,043	\$108,922	\$102,723
Average Household Income	\$151,616	\$133,367	\$126,299
<b>2022 Summary</b>			
Population	11,536	92,905	214,133
Households	3,676	30,162	71,667
Families	2,963	24,491	54,501
Average Household Size	3.14	3.07	2.99
Owner Occupied Housing Units	2,987	25,313	51,459
Renter Occupied Housing Units	688	4,849	20,209
Median Age	33.3	34.6	33.7
Median Household Income	\$133,041	\$115,644	\$108,839
Average Household Income	\$169,052	\$149,514	\$141,672
<b>Trends: 2017-2022 Annual Rate</b>			
Population	4.86%	3.04%	3.24%
Households	4.81%	3.01%	3.17%
Families	4.67%	2.87%	3.00%
Owner Households	4.52%	2.84%	2.93%
Median Household Income	1.25%	1.20%	1.16%

Source: U.S. Census Bureau, Census 2010 Summary File 1. Esri forecasts for 2017 and 2022.



# Demographic and Income Comparison Profile

255 Lebanon Rd, Frisco, Texas, 75034  
Rings: 1, 3, 5 mile radii

Prepared by Esri  
Latitude: 33.12716  
Longitude: -96.89064

2017 Households by Income	1 mile		3 miles		5 miles	
	Number	Percent	Number	Percent	Number	Percent
<\$15,000	52	1.8%	635	2.4%	1,963	3.2%
\$15,000 - \$24,999	53	1.8%	934	3.6%	2,418	3.9%
\$25,000 - \$34,999	73	2.5%	1,158	4.5%	3,076	5.0%
\$35,000 - \$49,999	77	2.6%	1,717	6.6%	4,910	8.0%
\$50,000 - \$74,999	254	8.7%	3,473	13.4%	8,479	13.8%
\$75,000 - \$99,999	389	13.4%	3,227	12.4%	8,414	13.7%
\$100,000 - \$149,999	893	30.7%	6,967	26.8%	15,731	25.7%
\$150,000 - \$199,999	553	19.0%	3,748	14.4%	7,650	12.5%
\$200,000+	564	19.4%	4,140	15.9%	8,682	14.2%
Median Household Income	\$125,043		\$108,922		\$102,723	
Average Household Income	\$151,616		\$133,367		\$126,299	
Per Capita Income	\$49,920		\$43,459		\$42,564	

2022 Households by Income	1 mile		3 miles		5 miles	
	Number	Percent	Number	Percent	Number	Percent
<\$15,000	64	1.7%	732	2.4%	2,211	3.1%
\$15,000 - \$24,999	56	1.5%	966	3.2%	2,438	3.4%
\$25,000 - \$34,999	75	2.0%	1,135	3.8%	2,965	4.1%
\$35,000 - \$49,999	77	2.1%	1,614	5.4%	4,635	6.5%
\$50,000 - \$74,999	267	7.3%	3,466	11.5%	8,709	12.2%
\$75,000 - \$99,999	456	12.4%	3,596	11.9%	9,705	13.5%
\$100,000 - \$149,999	1,112	30.3%	8,345	27.7%	19,497	27.2%
\$150,000 - \$199,999	740	20.1%	4,747	15.7%	9,855	13.8%
\$200,000+	828	22.5%	5,562	18.4%	11,653	16.3%
Median Household Income	\$133,041		\$115,644		\$108,839	
Average Household Income	\$169,052		\$149,514		\$141,672	
Per Capita Income	\$55,484		\$48,635		\$47,602	

**Data Note:** Income is expressed in current dollars.

**Source:** U.S. Census Bureau, Census 2010 Summary File 1. Esri forecasts for 2017 and 2022.



# Demographic and Income Comparison Profile

255 Lebanon Rd, Frisco, Texas, 75034  
Rings: 1, 3, 5 mile radii

Prepared by Esri  
Latitude: 33.12716  
Longitude: -96.89064

2010 Population by Age	1 mile		3 miles		5 miles	
	Number	Percent	Number	Percent	Number	Percent
Age 0 - 4	315	10.5%	5,281	9.2%	12,298	9.4%
Age 5 - 9	301	10.1%	5,804	10.1%	13,150	10.0%
Age 10 - 14	238	7.9%	4,986	8.7%	11,118	8.5%
Age 15 - 19	119	4.0%	3,485	6.1%	7,934	6.0%
Age 20 - 24	56	1.9%	2,014	3.5%	5,535	4.2%
Age 25 - 34	376	12.6%	7,558	13.2%	19,966	15.2%
Age 35 - 44	638	21.3%	11,535	20.2%	26,672	20.3%
Age 45 - 54	352	11.8%	8,127	14.2%	17,414	13.3%
Age 55 - 64	274	9.2%	4,845	8.5%	10,194	7.8%
Age 65 - 74	250	8.4%	2,556	4.5%	4,852	3.7%
Age 75 - 84	71	2.4%	803	1.4%	1,655	1.3%
Age 85+	7	0.2%	221	0.4%	473	0.4%

2017 Population by Age	1 mile		3 miles		5 miles	
	Number	Percent	Number	Percent	Number	Percent
Age 0 - 4	849	9.3%	6,713	8.4%	15,508	8.5%
Age 5 - 9	968	10.6%	7,620	9.5%	17,148	9.4%
Age 10 - 14	920	10.1%	7,325	9.2%	16,173	8.9%
Age 15 - 19	573	6.3%	5,185	6.5%	11,617	6.4%
Age 20 - 24	332	3.6%	3,543	4.4%	8,941	4.9%
Age 25 - 34	912	10.0%	9,337	11.7%	24,603	13.5%
Age 35 - 44	1,743	19.2%	14,276	17.9%	33,563	18.4%
Age 45 - 54	1,291	14.2%	11,456	14.3%	25,270	13.8%
Age 55 - 64	750	8.2%	7,685	9.6%	16,246	8.9%
Age 65 - 74	567	6.2%	4,844	6.1%	9,557	5.2%
Age 75 - 84	161	1.8%	1,581	2.0%	3,121	1.7%
Age 85+	33	0.4%	404	0.5%	874	0.5%

2022 Population by Age	1 mile		3 miles		5 miles	
	Number	Percent	Number	Percent	Number	Percent
Age 0 - 4	1,053	9.1%	7,800	8.4%	18,193	8.5%
Age 5 - 9	1,203	10.4%	8,666	9.3%	19,697	9.2%
Age 10 - 14	1,164	10.1%	8,398	9.0%	18,660	8.7%
Age 15 - 19	883	7.7%	6,413	6.9%	14,109	6.6%
Age 20 - 24	426	3.7%	3,803	4.1%	9,798	4.6%
Age 25 - 34	1,298	11.3%	11,900	12.8%	31,354	14.6%
Age 35 - 44	1,909	16.5%	15,978	17.2%	38,066	17.8%
Age 45 - 54	1,668	14.5%	12,393	13.3%	27,843	13.0%
Age 55 - 64	957	8.3%	8,754	9.4%	18,770	8.8%
Age 65 - 74	708	6.1%	5,946	6.4%	11,849	5.5%
Age 75 - 84	229	2.0%	2,348	2.5%	4,703	2.2%
Age 85+	38	0.3%	509	0.5%	1,092	0.5%

Source: U.S. Census Bureau, Census 2010 Summary File 1. Esri forecasts for 2017 and 2022.



# Demographic and Income Comparison Profile

255 Lebanon Rd, Frisco, Texas, 75034  
Rings: 1, 3, 5 mile radii

Prepared by Esri  
Latitude: 33.12716  
Longitude: -96.89064

2010 Race and Ethnicity	1 mile		3 miles		5 miles	
	Number	Percent	Number	Percent	Number	Percent
White Alone	2,151	71.8%	44,030	77.0%	97,561	74.3%
Black Alone	244	8.1%	3,956	6.9%	11,773	9.0%
American Indian Alone	11	0.4%	341	0.6%	865	0.7%
Asian Alone	433	14.5%	3,896	6.8%	9,498	7.2%
Pacific Islander Alone	2	0.1%	35	0.1%	80	0.1%
Some Other Race Alone	78	2.6%	3,117	5.4%	7,262	5.5%
Two or More Races	75	2.5%	1,842	3.2%	4,222	3.2%
Hispanic Origin (Any Race)	282	9.4%	9,960	17.4%	23,127	17.6%

2017 Race and Ethnicity	1 mile		3 miles		5 miles	
	Number	Percent	Number	Percent	Number	Percent
White Alone	5,909	64.9%	56,730	70.9%	124,785	68.3%
Black Alone	913	10.0%	6,817	8.5%	20,017	11.0%
American Indian Alone	23	0.3%	409	0.5%	1,082	0.6%
Asian Alone	1,680	18.5%	8,206	10.3%	19,035	10.4%
Pacific Islander Alone	4	0.0%	57	0.1%	135	0.1%
Some Other Race Alone	253	2.8%	4,853	6.1%	10,864	5.9%
Two or More Races	319	3.5%	2,899	3.6%	6,702	3.7%
Hispanic Origin (Any Race)	1,093	12.0%	14,985	18.7%	34,086	18.7%

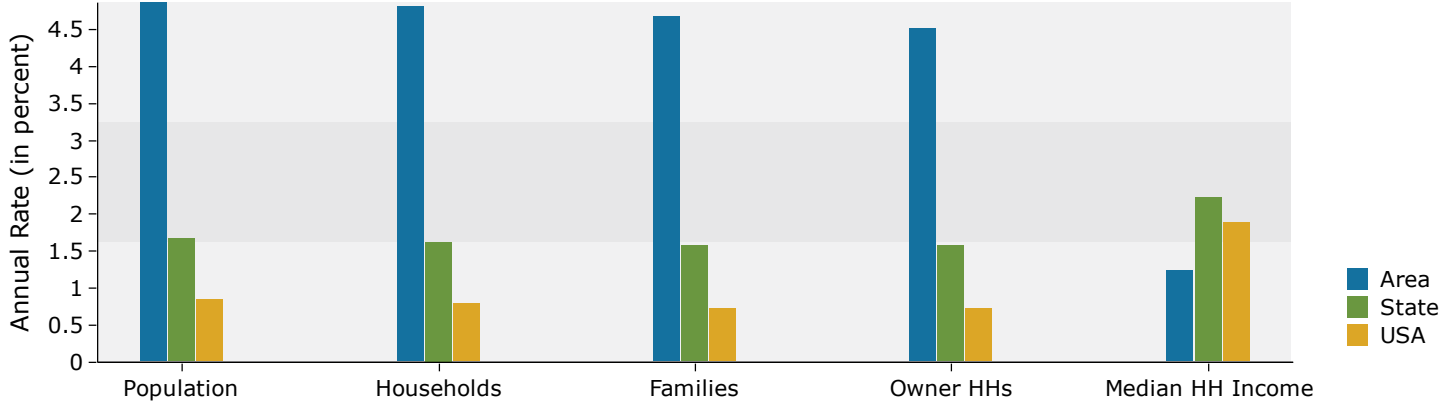
  

2022 Race and Ethnicity	1 mile		3 miles		5 miles	
	Number	Percent	Number	Percent	Number	Percent
White Alone	6,834	59.3%	61,407	66.1%	135,962	63.5%
Black Alone	1,311	11.4%	9,164	9.9%	26,905	12.6%
American Indian Alone	26	0.2%	445	0.5%	1,197	0.6%
Asian Alone	2,569	22.3%	12,045	13.0%	27,689	12.9%
Pacific Islander Alone	6	0.1%	71	0.1%	173	0.1%
Some Other Race Alone	345	3.0%	6,069	6.5%	13,552	6.3%
Two or More Races	443	3.8%	3,705	4.0%	8,655	4.0%
Hispanic Origin (Any Race)	1,461	12.7%	18,300	19.7%	41,899	19.6%

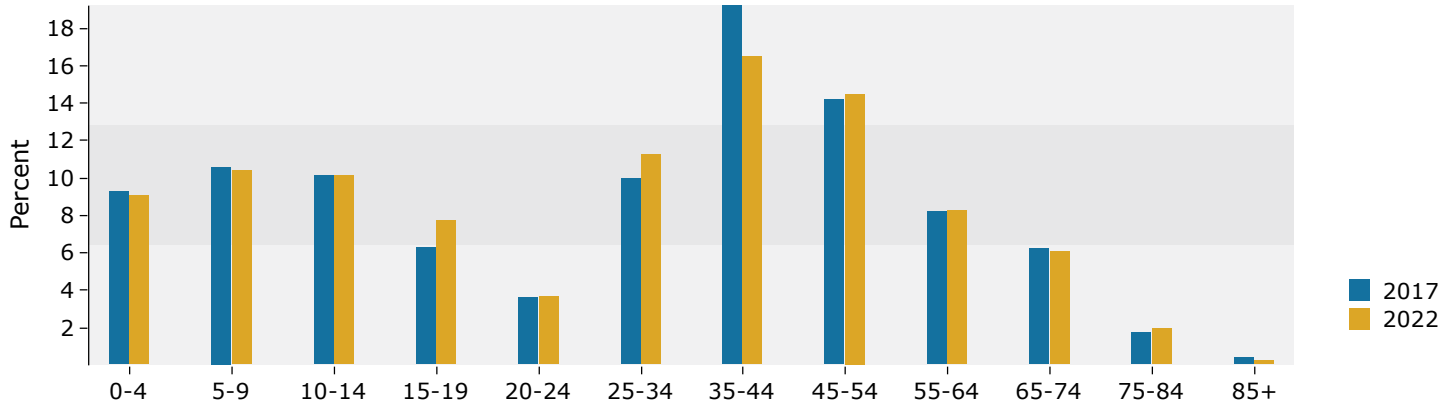
Source: U.S. Census Bureau, Census 2010 Summary File 1. Esri forecasts for 2017 and 2022.

## 1 mile

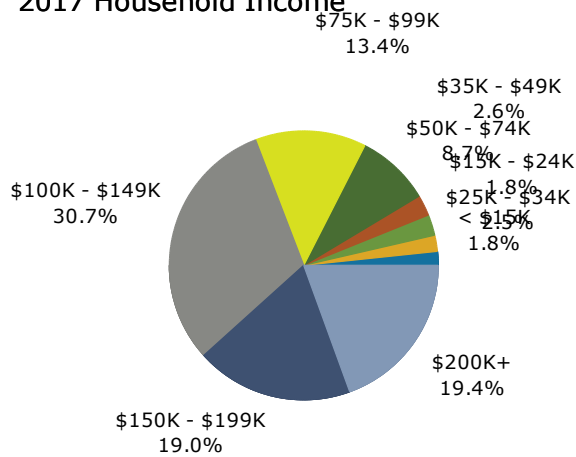
### Trends 2017-2022



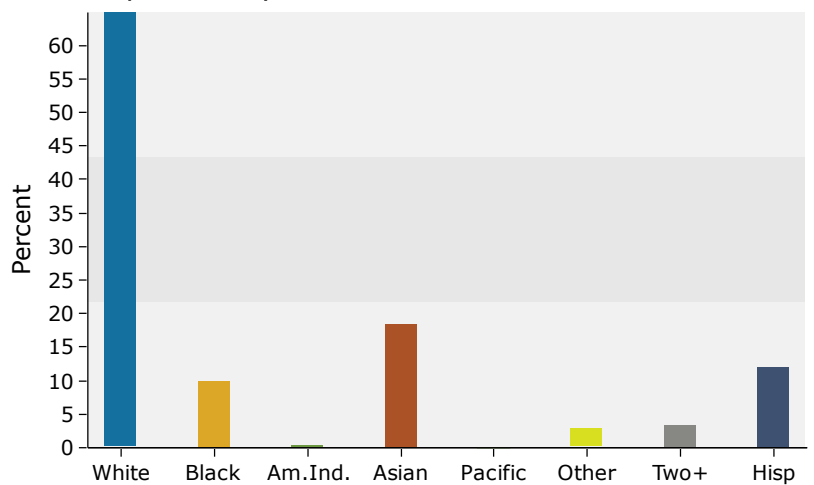
### Population by Age



### 2017 Household Income



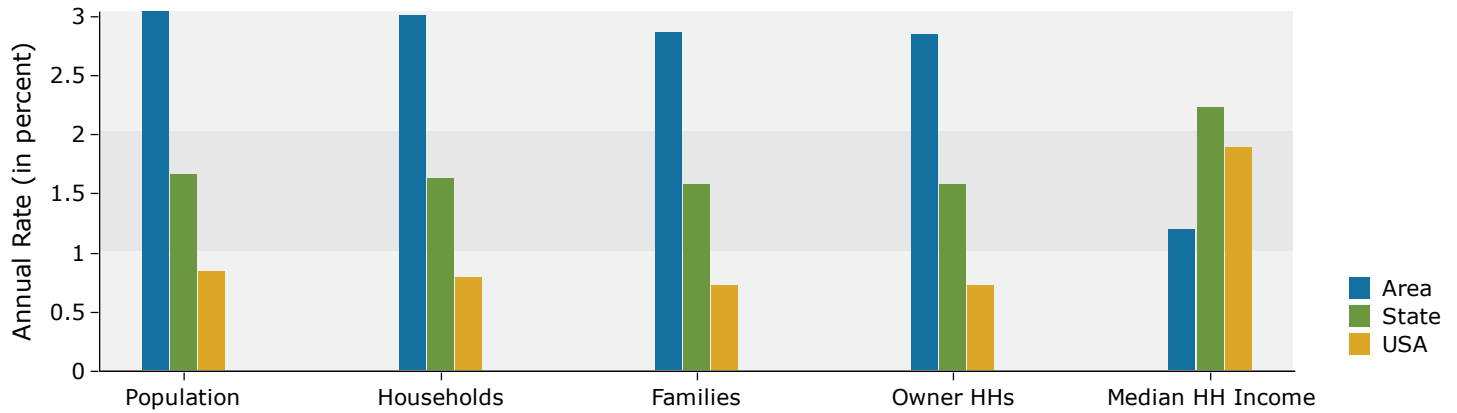
### 2017 Population by Race



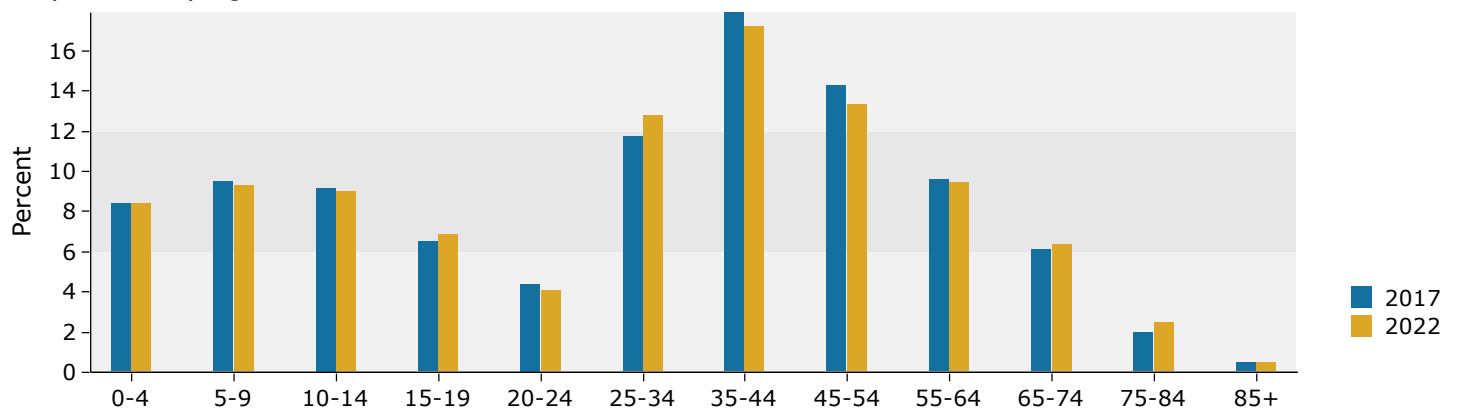
Source: U.S. Census Bureau, Census 2010 Summary File 1. Esri forecasts for 2017 and 2022.

### 3 miles

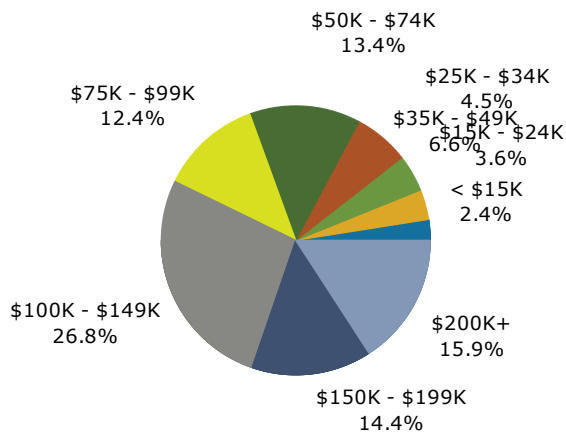
#### Trends 2017-2022



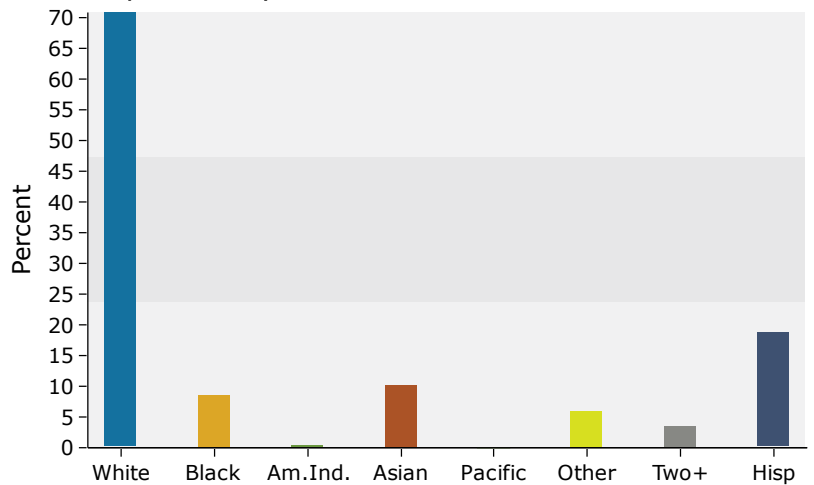
#### Population by Age



#### 2017 Household Income



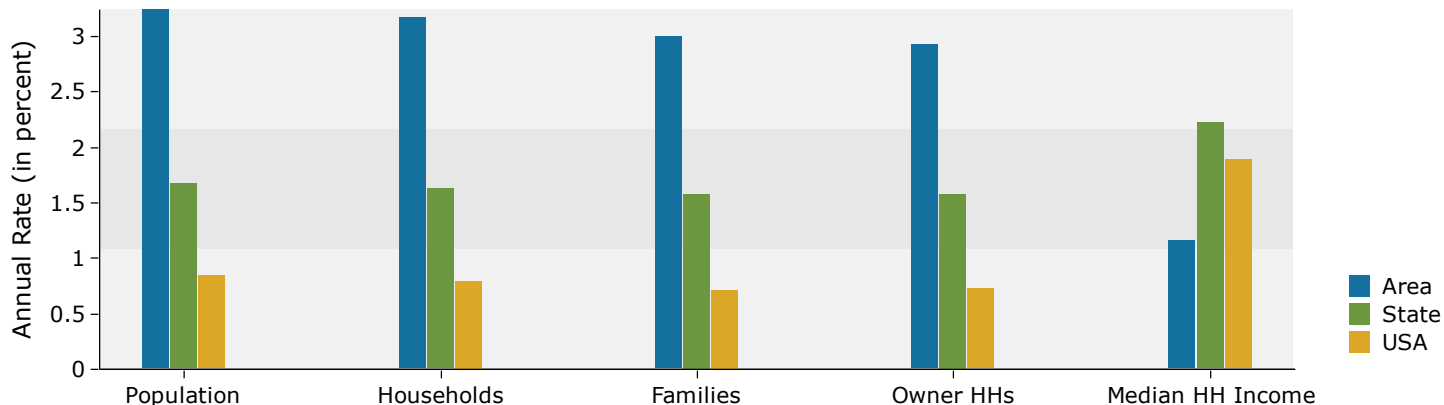
#### 2017 Population by Race



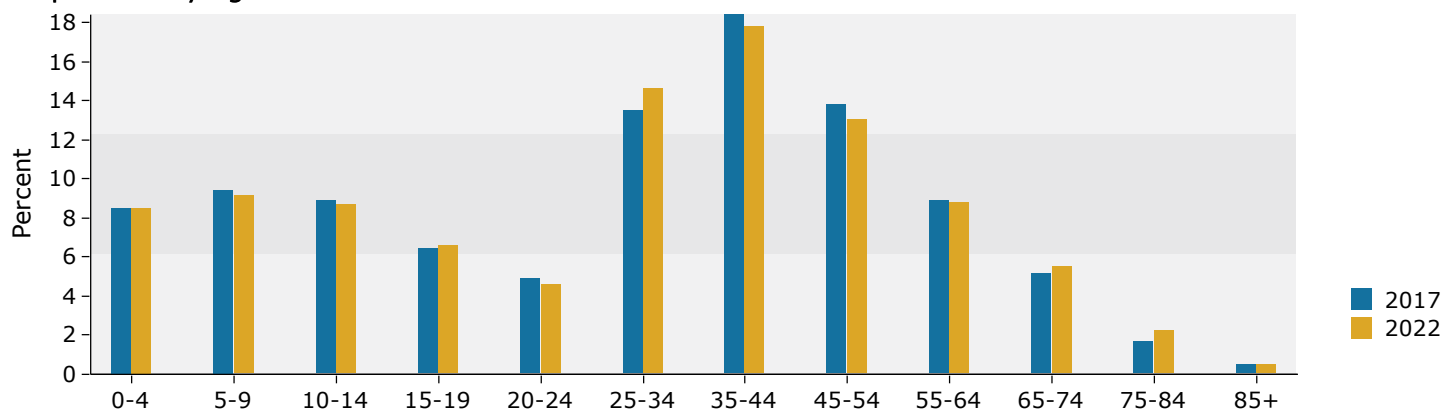
Source: U.S. Census Bureau, Census 2010 Summary File 1. Esri forecasts for 2017 and 2022.

## 5 miles

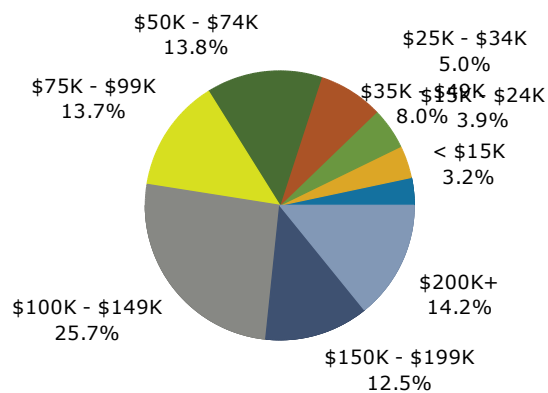
### Trends 2017-2022



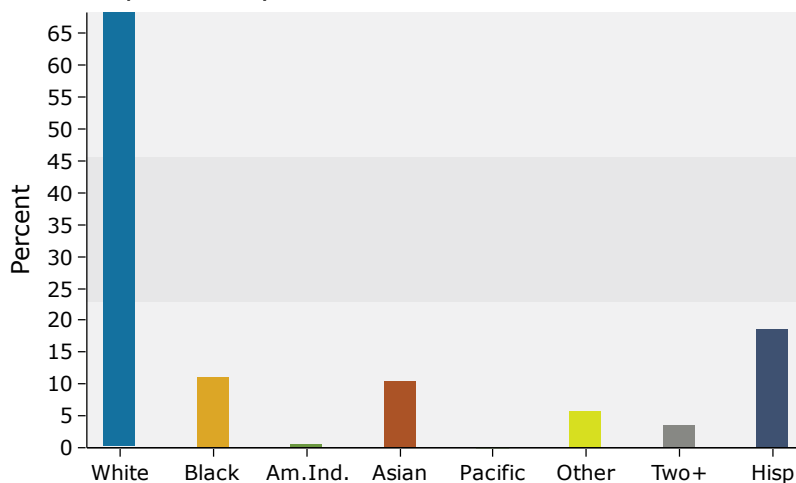
### Population by Age



### 2017 Household Income



### 2017 Population by Race



Source: U.S. Census Bureau, Census 2010 Summary File 1. Esri forecasts for 2017 and 2022.